

Brompton and Sawdon Community Primary School.

Headteacher: Mr J. Logue

Tel: 01723 859359

Cayley Lane, Brompton by Sawdon, Scarborough YO13 9DL

email: admin@bromptonsawdon.n-yorks.sch.uk

website: www.bromptonsawdon.n-yorks.sch.uk



17 November 2017

Dear Parents/Carers

There are lots of things happening at School to celebrate the Festive period.

On **Friday 1 December** our decorated Christmas Trees will go on display in All Saints Church in Brompton for the duration of the festive period. You are welcome along to the preview evening which starts at 6.30pm with interval refreshments and mulled wine for £5 per adult. Church will also be open on Saturday from 10am until 4pm if you would rather call in for a more casual viewing.

If children would like to wear their **Christmas Jumpers** to School on **Friday 8 December** we are asking for a donation of a tombola prize in exchange for not coming to School in uniform. These will be used for the Friends of Brompton School Christmas Fair the following week.

The Friends of Brompton School are putting on the **Christmas Fair** on **Tuesday 12 December** from 3.30pm at School. Please remember to come along and bring your friends and family. This is one of our major events of the year to contribute to School Trips and Events for all the children. Volunteers and donations are urgently needed if you can bake, give a raffle prize or help run a stall. There will be a box in the entrance for prizes and baking can be brought to School nearer the time.

Class 1 and Class 2 will be putting on their Christmas performance – “Lights, Camel, Action!” in Brompton Village Hall on **Tuesday 12 Dec at 2.15pm & Thursday 14 Dec at 6pm**. Everyone is very welcome.

On **Tuesday 19 December** the children are going to the Scarborough Spa for the morning performance of Jack and the Beanstalk. They will travel by coach and be back for a special picnic lunch when we return to school. The total cost of this trip is £11.30 per child. We are asking for a voluntary contribution of £6 per child as Friends of the School have agreed to pay the rest. Unfortunately if we do not receive sufficient contributions the trip will not go ahead.

Wednesday 20 December is the day for **Christmas Lunch**. Christmas Lunch will be a traditional meal and will be available at the same charge of £2.20 or included in the free school meals scheme for those children who are eligible. We need to know numbers by Wednesday 29 November so please complete the form overleaf if you wish your child to have a Christmas Lunch. Due to the complexity of the meal we will not be offering an alternative that day. Payment will be by ParentPay as normal.

Our **Class Parties** are on **Thursday 21 December** and **children can bring in snacks/sweets** to share if they wish e.g. fruit, sausage rolls, crisps, buns etc. and during the afternoon we will play party games. Party clothes can be brought to School to change into for the afternoon.

No Uniform on **Friday 22 December**, as this is the day we break up! Please come to school in something festive and bring a £1 for School Funds. We break for Christmas at 3.30pm and return to School at 8.55am on **Tuesday 9 January 2018!**

Thank you for your continued support.

John Logue

Headteacher

Brompton and Sawdon Community Primary School.

Headteacher: Mr J. Logue

Tel: 01723 859359

Cayley Lane, Brompton by Sawdon, Scarborough YO13 9DL

email: admin@bromptonsawdon.n-yorks.sch.uk

website: www.bromptonsawdon.n-yorks.sch.uk



***Please return this sheet back to School by
Wednesday 29 November 2017***

Name of child/children

CHRISTMAS LUNCH ORDER



I would like my child/children to have a Christmas Lunch on
Wednesday 20 December.

OR

I will send my child/children with a packed lunch.

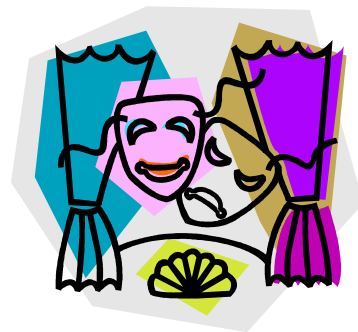
SignedParent/Carer

-oOo-

PANTOMIME

Jack and the Beanstalk, Scarborough Spa, Tuesday 19
December 2017

Please arrange to log into your ParentPay account to make
the contribution and give consent for your child to attend.
In the notes box you can specify which lunch they would
like:



CHEESE / TUNA / EGG / HOME lunch.